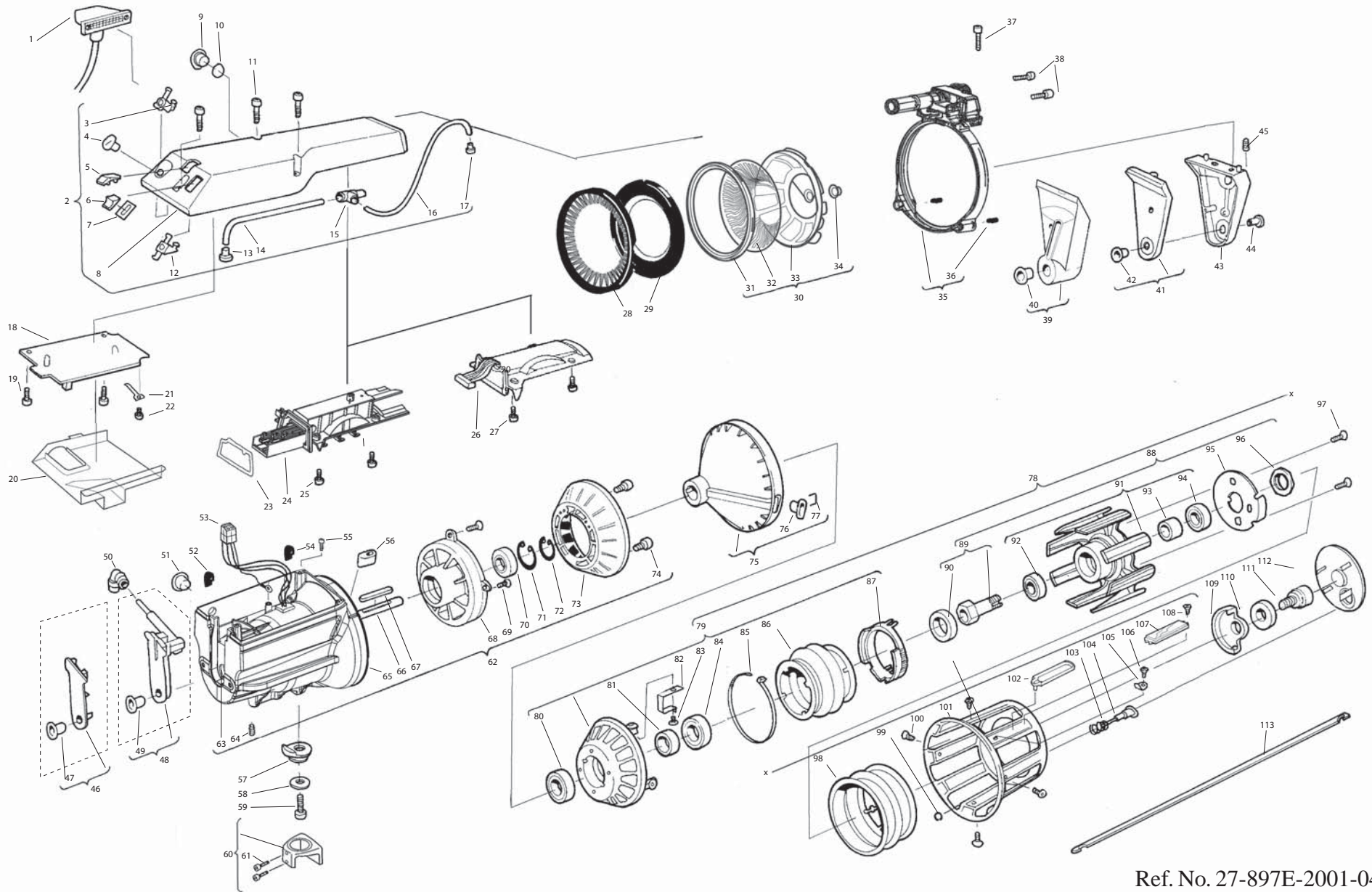




# Luna X2 - Exploded view



	PAGE 1 (4)	Spare parts list for Luna X2 5027-.20/21/22/23/24-.XXC. Luna X2 5127-.20/21/22/23/24-.XXC.	REF. NO. 27-897E- 2001-04/ 1126	
		Spare parts list for Luna X2 5027-.20/21/22/23/24-.XXD. Luna X2 5127-.20/21/22/23/24-.XXD.		

Parts specific only to certain models are identified with □ in the centre column.

Luna X2 Optical sensor = O.



Luna X2 Mechanical sensor = M.

Unmarked positions are common to all feeder models.

Luna X2 Rev C to series number 06131532

Luna X2 Rev D from series number 06104373

POS	PART NO	DESCRIPTION	Luna X2 Rev C		Luna X2 Rev D		REMARKS
			O	M	O	M	
1	27.0676.1200	CABLE 1,20m					
1	27.0676.1750	CABLE 1,75m					
2	27.0716.012L	TOP COVER assy.		□		□	Manual and half-threading
2	27.0716.011L	TOP COVER assy.		□		□	Full-threading
2	27.0716.002L	TOP COVER assy.	□		□		Manual and half-threading
2	27.0716.001L	TOP COVER assy.	□		□		Full-threading
3	27.0332	MAGNET HOLDER		□		□	
4	27.0509	SWITCH, max speed		□		□	
5	27.0143	INDICATOR COVER					
6	24.0047	SWITCH, on/off					
7	24.0048	FRAME					
8	27.0150.120L	TOP COVER	□		□		
8	27.0150.130L	TOP COVER		□		□	
9	27.0724.001	SWITCH, S/Z compl.					
9	900.5531	PLUG					
10	900.9104	O-RING					
11	900.0302	SCREW					
12	27.0331	MAGNET HOLDER, on/off					
13	27.0026	CONNECTOR					Half and full-threading
14	27.0141	HOSE					Half and full-threading
15	27.0142	CONNECTOR					
16	25.0307.004	HOSE					Full-threading
17	27.0222	CONNECTOR					Full-threading
18	27.9144.NNNN*	CIRCUIT BOARD compl.		□		□	*Loom model must be specified (Manufacture and type)
18	27.9145.NNNN*	CIRCUIT BOARD compl.	□		□		*Loom model must be specified (Manufacture and type)
19	900.0426	SCREW					
20	27.0730	PROTECTION COVER					
21	27.0674	SPRING PLATE					
22	900.0426	SCREW					
23	27.0190	SEAL					
24	27.0672.102	SENSOR compl.		□			Plasma coated version=27.0672.112
24	27.0672.202	SENSOR compl.				□	Plasma coated version=27.0672.212
25	900.0117	SCREW	□		□		
26	27.0692.001	SENSOR COMPL.	□				
26	27.0692.002	SENSOR COMPL.			□		
27	900.0117	SCREW		□		□	
28	27.0492.005	BRUSH SOFT, natural, straight.					
28	27.0492.105	BRUSH SOFT, natural, z-rotation.					
28	27.0492.205	BRUSH SOFT, natural, s-rotation.					
28	27.0492.002	BRUSH MEDIUM, natural, straight.					
28	27.0492.102	BRUSH MEDIUM, natural, z-rotation.					
28	27.0492.202	BRUSH MEDIUM, natural, s-rotation.					
28	27.0492.003	BRUSH STIFF, natural, straight.					
28	27.0492.103	BRUSH STIFF, natural, z-rotation.					
28	27.0492.203	BRUSH STIFF, natural, s-rotation.					
28	27.0492.001	BRUSH SOFT, synthetic, straight.					
28	27.0492.101	BRUSH SOFT, synthetic, z-rotation.					
28	27.0492.201	BRUSH SOFT, synthetic, s-rotation.					
28	27.0492.006	BRUSH MEDIUM, synthetic, straight.					
28	27.0492.106	BRUSH MEDIUM, synthetic, z-rotation.					
28	27.0492.206	BRUSH MEDIUM, synthetic, s-rotation.					
28	27.0492.004	BRUSH STIFF, synthetic, straight.					

	PAGE 2 (4)	Spare parts list for Luna X2 5027-.20/21/22/23/24-.XXC. Luna X2 5127-.20/21/22/23/24-.XXC.	REF. NO. 27-897E- 2001-04/ 1126	
		Spare parts list for Luna X2 5027-.20/21/22/23/24-.XXD. Luna X2 5127-.20/21/22/23/24-.XXD.		

Parts specific only to certain models are identified with □ in the centre column.

Luna X2 Optical sensor = O.



Luna X2 Mechanical sensor = M.

Unmarked positions are common to all feeder models.

Luna X2 Rev C to series number 06131532

Luna X2 Rev D from series number 06104373

POS	PART NO	DESCRIPTION	Luna X2 Rev C		Luna X2 Rev D		REMARKS
			O	M	O	M	
28	27.0492.104	BRUSH STIFF, synthetic, z-rotation.					
28	27.0492.204	BRUSH STIFF, synthetic, s-rotation.					
29	27.0524.001	E-FLEX 30° SOFT					Black colour (Strip only = 27.0438.001)
29	27.0573.102	E-FLEX 30° MEDIUM					Blue colour (Strip only = 27.0438.002)
29	27.0585.002	E-FLEX 30° STIFF					Red colour (Strip only = 27.0438.002)
29	27.0585.103	E-FLEX 30° EXTRA STIFF					Grey colour (Strip only = 27.0438.004)
29	27.0596.001	E-FLEX 42° SOFT					Black colour (Strip only = 27.0541.001)
29	27.0596.102	E-FLEX 42° MEDIUM					Blue colour (Strip only = 27.0541.002)
29	27.0734.002	E-FLEX 42° STIFF					Red colour (Strip only = 27.0541.002)
30	54T00730	LAMELLA BRAKE, soft Z-rotation, Compl.					
30	54T00731	LAMELLA BRAKE, medium Z-rotation, Compl.					
30	54T00732	LAMELLA BRAKE, stiff Z-rotation, Compl.					
31	43C00089	LOCKING RING					
32	35E00222	LAMELLA SOFT					
32	35E00221	LAMELLA MEDIUM					
32	35E00220	LAMELLA STIFF					
33	43C00090	BASKET					
34	27.0479.001	EYELET					
35	27.0491.001L	CYLINDER compl.					Manual and half-threading
35	27.0491.000L	CYLINDER compl.					Full-threading
36	27.0490	LOCATING DOGS					
37	900.0447	SCREW					
38	900.0496	SCREW					
39	27.0597.001	NOSE EXTENDER 30° compl.					Extra polished version = 27.0597.002
40	900.6163.001	EYELET					Extra polished version = 900.6163.003
41	27.0465.001	NOSE EXTENDER 42° compl.					Extra polished version = 27.0465.002
42	900.6163.001	EYELET					Extra polished version = 900.6163.003
43	27.0144.100L	Nose Compl.30° included Pos. 39,44,45					Extra polished version = 27.0144.101L
43	27.0144.000L	NOSE Compl. 42° included Pos. 41,44,45					Extra polished version = 27.0144.001L
44	900.6163.001	EYELET					Extra polished version = 900.6163.003
45	900.0495	SCREW					
46	27.0547.001	COVER compl.					Manual threading (Extra polished version = 27.0547.002)
47	900.6101	EYELET					Extra polished version = 900.6101.001
48	27.0170.001	VALVE compl.					Full-threading (Extra polished version = 27.0170.101)
48	27.0170.002	VALVE compl.					Half-threading (Extra polished version = 27.0170.102)
49	900.6101	EYELET					Extra polished version = 900.6101.001
50	900.9296	CONNECTOR					
51	900.5189	PLUG					
52	27.0739	SEALING					
53	27.0644	STATOR	□	□			
53	27.0768.004	STATOR			□	□	
54	27.0739	SEALING					
55	900.0117	SCREW					
56	900.6160	EYELET					
57	27.0215	WASHER					
58	900.2008	WASHER					
59	900.0497	SCREW					
60	24.0462	MOUNT assy.					

	PAGE 3 (4)	Spare parts list for Luna X2 5027-.20/21/22/23/24-.XXC. Luna X2 5127-.20/21/22/23/24-.XXC.	REF. NO. 27-897E- 2001-04/ 1126	
		Spare parts list for Luna X2 5027-.20/21/22/23/24-.XXD. Luna X2 5127-.20/21/22/23/24-.XXD.		

Parts specific only to certain models are identified with ☒ in the centre column.

Luna X2 Optical sensor = O.



Luna X2 Mechanical sensor = M.

Unmarked positions are common to all feeder models.

Luna X2 Rev C to series number 06131532

Luna X2 Rev D from series number 06104373

POS	PART NO	DESCRIPTION	Luna X2 Rev C		Luna X2 Rev D		REMARKS
			O	M	O	M	
61	900.0035	SCREW					
62	27.0712.000K	MOTOR compl.	☒	☒			
62	27.0781.000K	MOTOR compl.			☒	☒	
63	900.4061	BEARING					
64	900.0529	SCREW					
65	27.0713.000K	MOTOR WITH STATOR	☒	☒			
65	27.0780.000K	MOTOR WITH STATOR			☒	☒	
66	27.0689	ROTOR compl.	☒	☒			
66	27.0779	ROTOR compl.			☒	☒	
67	900.9314	KEY					
68	28.0009	MOTOR FLANGE					
69	900.0075	SCREW					
70	900.4064	BEARING					
71	900.9014	CIRCLIP					
72	900.9017	CIRCLIP					
73	27.0166.003	MAGNET RING					
74	900.0075	SCREW					
75	27.0708.000	WINDING DISC compl.	☒	☒			
75	27.0708.002	WINDING DISC compl.			☒	☒	
76	25.0078	EYELET					
77	25.0081.001	EYELET HOLDER					
78	27.0714.101	SPOOLBODY assy		☒		☒	
78	27.0714.001	SPOOLBODY assy	☒		☒		
79	27.0157	MAGNET RING compl.					
80	900.4064	BEARING					
81	27.0108	SPACER					
82	27.0208	EARTH STRIP					
83	31.0641	THREAD INSERT					
84	900.4064	BEARING					
85	900.5197	STRAP					
86	27.0077	BELLOWS					
87	27.0070	BELLOWS HOLDER					
88	27.0232.003	TUMBLE CYLINDER compl.					
89	27.0429.002	INCLINED HUB compl.					
90	27.0393	WASHER					
91	27.0330.000	TUMBLE CYLINDER assy.					
92	900.4063	BEARING					
93	120.0024	SPACER					
94	900.4063	BEARING					
95	27.0224	S/Z WASHER					
96	120.0042	NUT					
97	900.0153	SCREW					
98	27.0078	BELLOWS					
99	900.9055	CLIP					
100	900.0327.001	SCREW					
101	27.0361.012	SPOOLBODY					
102	27.0696	INSERT		☒		☒	
103	27.0163	SPRING					
104	28.0007	S/Z BUTTON					
105	27.0219	YARN BREAK MIRROR	☒		☒		
106	900.0327.001	SCREW	☒		☒		
107	27.0693	MIRROR compl.	☒		☒		
108	900.0494	SCREW	☒		☒		
109	27.0158	BALANCE WEIGHT					

	PAGE 4 (4)	Spare parts list for Luna X2 5027-.20/21/22/23/24-.XXC. Luna X2 5127-.20/21/22/23/24-.XXC.  Spare parts list for Luna X2 5027-.20/21/22/23/24-.XXD. Luna X2 5127-.20/21/22/23/24-.XXD.	REF. NO. 27-897E- 2001-04/ 1126	
<p>Parts specific only to certain models are identified with α in the centre column.  Luna X2 Optical sensor = O.  Luna X2 Mechanical sensor = M.  Unmarked positions are common to all feeder models.  Luna X2 Rev C to series number 06131532  Luna X2 Rev D from series number 06104373</p>				

POS	PART NO	DESCRIPTION	Luna X2 Rev C		Luna X2 Rev D		REMARKS
			O	M	O	M	
110	24.0137	SPRING WASHER					
111	24.0134	SCREW					
112	27.0160	CONE					
113	820.0272	THREADING NEEDLE					